

Kiwanis Down Syndrome Foundation



KDSF
NATIONAL CENTRE



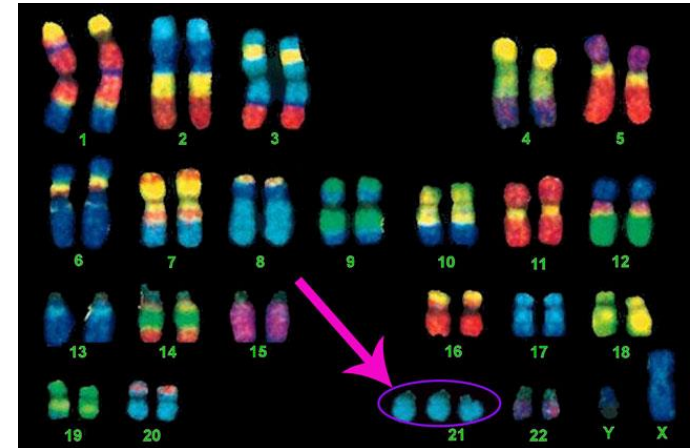
KDSF
NATIONAL CENTRE

The Mission & Objective

The Kiwanis Down Syndrome Foundation is committed to the welfare of children with Down Syndrome, its main focus being the education of these children up to 6 years old.

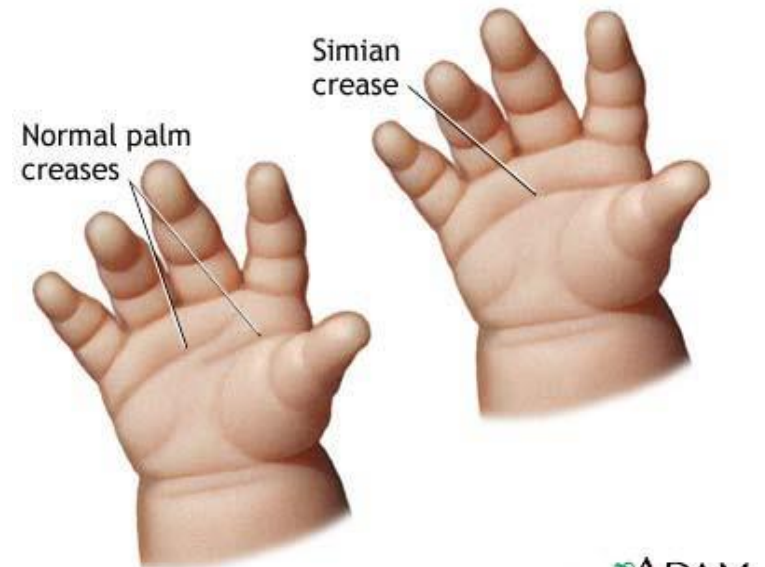
WHAT IS DOWN SYNDROME?

- ❖ Down Syndrome is **NOT** a disease
- ❖ Its life-long condition that causes delays in learning and development.
- ❖ This condition results in an additional copy of the whole or part of the chromosome 21, usually in every cell.
- ❖ Individuals with DS have 47 chromosomes instead of the usual 46.
- ❖ It is the most frequently occurring chromosomal disorder.



CHARACTERISTICS OF DOWN SYNDROME

- ❖ Low muscle tone – hypotonia (babies appear "floppy")
- ❖ Hyperflexibility (excessive ability to extend joints)
- ❖ Excess skin on the back of the neck.
- ❖ Single deep crease across the center of the palm



CHARACTERISTICS OF DOWN SYNDROME

- ❖ Flat facial features, with a small nose
- ❖ Upward slant to the eyes
- ❖ Small, abnormally shaped ears
- ❖ Extra space between the big toe and the second toe



CHARACTERISTICS OF DOWN SYNDROME

- ❖ Small skin folds on the inner corner of the eyes
- ❖ Enlarged tongue that tends to stick out
- ❖ Fifth finger has only one flexion furrow instead of two



COMMON MEDICAL COMPLICATIONS

- ❖ Congenital heart disease
- ❖ Vision impairments – squint, lazy eye, long & short sightedness
- ❖ Hearing impairments – glue ear
- ❖ Thyroid dysfunctions – lethargy, weight gain,
- ❖ Bowel abnormalities – constipation, diarrhoea, and indigestion
- ❖ Gastrointestinal
- ❖ Leukemia
- ❖ Neurology – alzheimer's, epilepsy
- ❖ Sleep apnea.

**The Early Intervention Programme & Services
of
Kiwanis Down Syndrome Foundation**



KDSF
NATIONAL CENTRE

KDSF CENTRES



Petaling Jaya - 1989



Johor Baru - 1991



Klang - 1994



Melaka - 2000



Kulai - 2012



KDSF
NATIONAL CENTRE

KDSF - NATIONAL CENTRE

Number of enrollment : 130

Number of Teachers : 18

Therapists : 4

Administrative Staff : 6

Management Team – Kiwanis Club Members



1989 KDSF – Petaling Jaya



2004 KDSF – National Centre



KDSF
NATIONAL CENTRE

EARLY INTERVENTION PROGRAMME

What does KDSF offer in the Early Intervention (EIP)?

EIP services include:

- Special Education Curriculum
- Physiotherapy & Occupational Therapy
- Speech Therapy (part of the teaching session)

Supported by

Resource Library – toys, books, audio-visual resources

How do KDSF Centres help parents?

- Opportunity to be counseled
- To share their experience
- To meet and support other parents



KDSF
NATIONAL CENTRE

SPECIAL EDUCATION CURRICULUM

**Infant Stimulation
Programme (ISP)**

Babies 2 - 24 mths



**Toddler's
Programme (TOD)**

Toddlers 2 yr – 3 yr



**Special Education
Programme (SEP)**

**Violet – 3 - 4 yrs
SRP 1 – 4 - 5 yrs
SRP 2 – 6 yrs**



Curriculum is Based on

☞ **Robert Dellar's Curriculum**

☞ **Hawaii Early Learning Profile**

Kiwanis

Down Syndrome Foundation



PROGRAMMES

Infant

2 months – 24 months

Main Criteria

Motor

Social

Frequency

Once a week – 1 hour

Primary focus

caregiver

caregiver sit in with

PT/OT/SP in charge



PROGRAMMES

TOD

2 years – 3 years

Main Criteria

Motor Skills

Cognitive Language

Social Self Help

Frequency

3 times a week – 2 ½ hour

Primary focus

- Parents education
- Letting go period
- Primary caregiver = Teachers
- Support by PT/OT/SP





KDSF
NATIONAL CENTRE

PROGRAMMES

SEP

4 years – 6 years

Main Criteria

Motor Skills

Cognitive Language

Social Self Help

School Readiness

Frequency

4 times a week – 3 hours

Primary focus

- Prepare for school
- Parents education
- Independent skills





KDSF
NATIONAL CENTRE

SERVICES by PHYSIO & OCCUPATIONAL THERAPISTS



SPECIALISED THERAPIES BY PT & OT



WATER THERAPY

SPECIALISED THERAPIES BY PT & OT



FEEDING THERAPY

Annual Activities: SPORTS, GRADUATION & CONCERT



Regular Health Check ups required

- Eye check up
- Dental check up
- Audiology check up





KDSF
NATIONAL CENTRE

Assistance by the Government

- Easy OKU registration.
- Organize and Provide annual health checks at the NGO Centres:
 - Eye checks
 - Audiology checks
 - Dental checks
-



KDSF
NATIONAL CENTRE

FINANCIAL SUPPORT

- KDSF-National Centre is a non-profit organization
- It does not receive regular grants from the Government or any Corporate organization
- KDSF-National Centre depends solely on public donations
- Annually KDSF-National Centre requires at least RM1.2 million to operate.
- To educate the student, the Centre requires at least RM800 per month per child. Students pay a heavily subsidized fees ranging from RM250, RM300 to RM350 per month.

THANK YOU